

# 3D laser scanner

Dept. of Civil Engineering, Ghent University



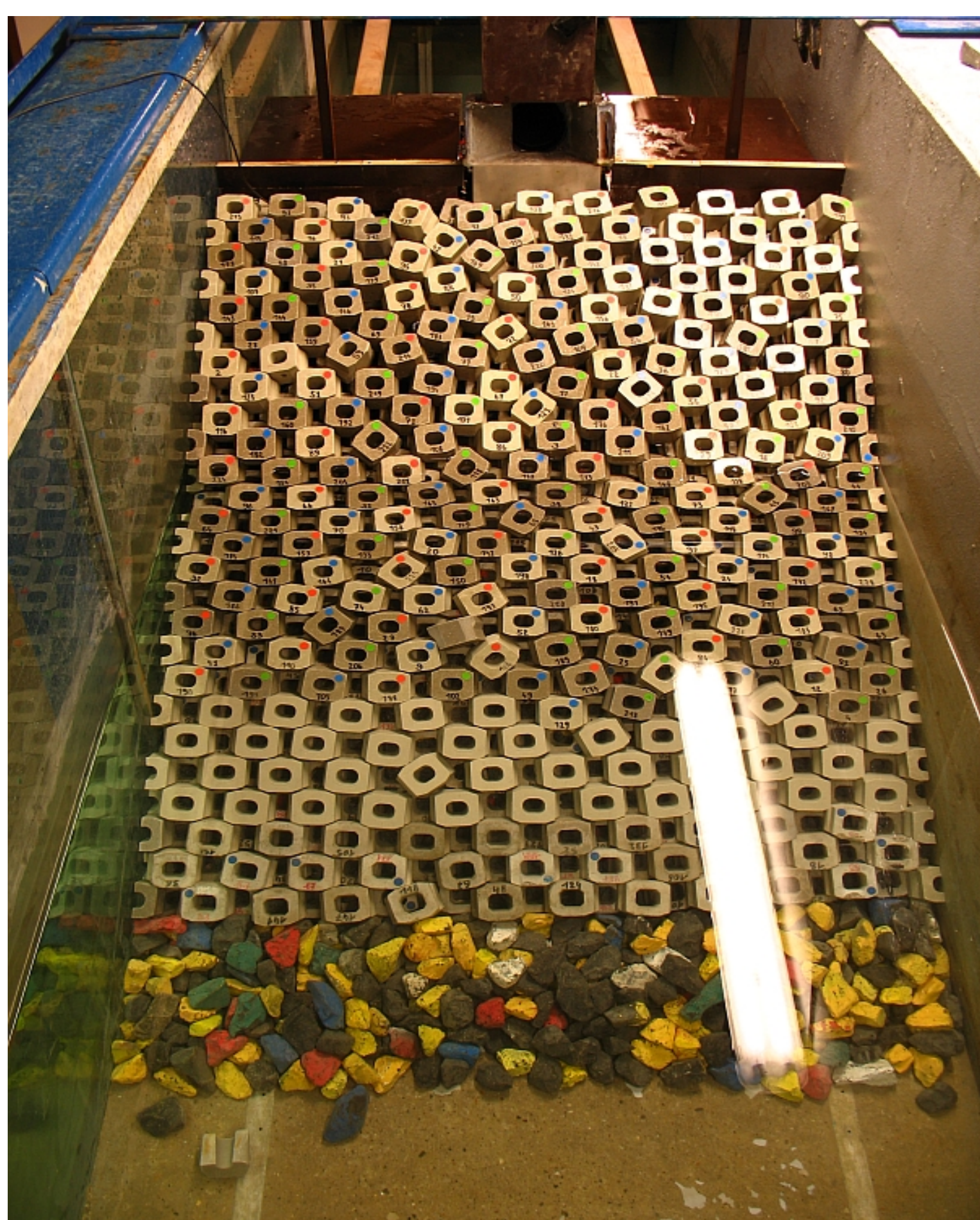
## Portable Laser Scanner

Designed to map structures and bathymetry.

- portable scanner (<0.9kg)
- scans up to 3m distance
- up to 88K points/sec
- 3D point accuracy <1.5mm



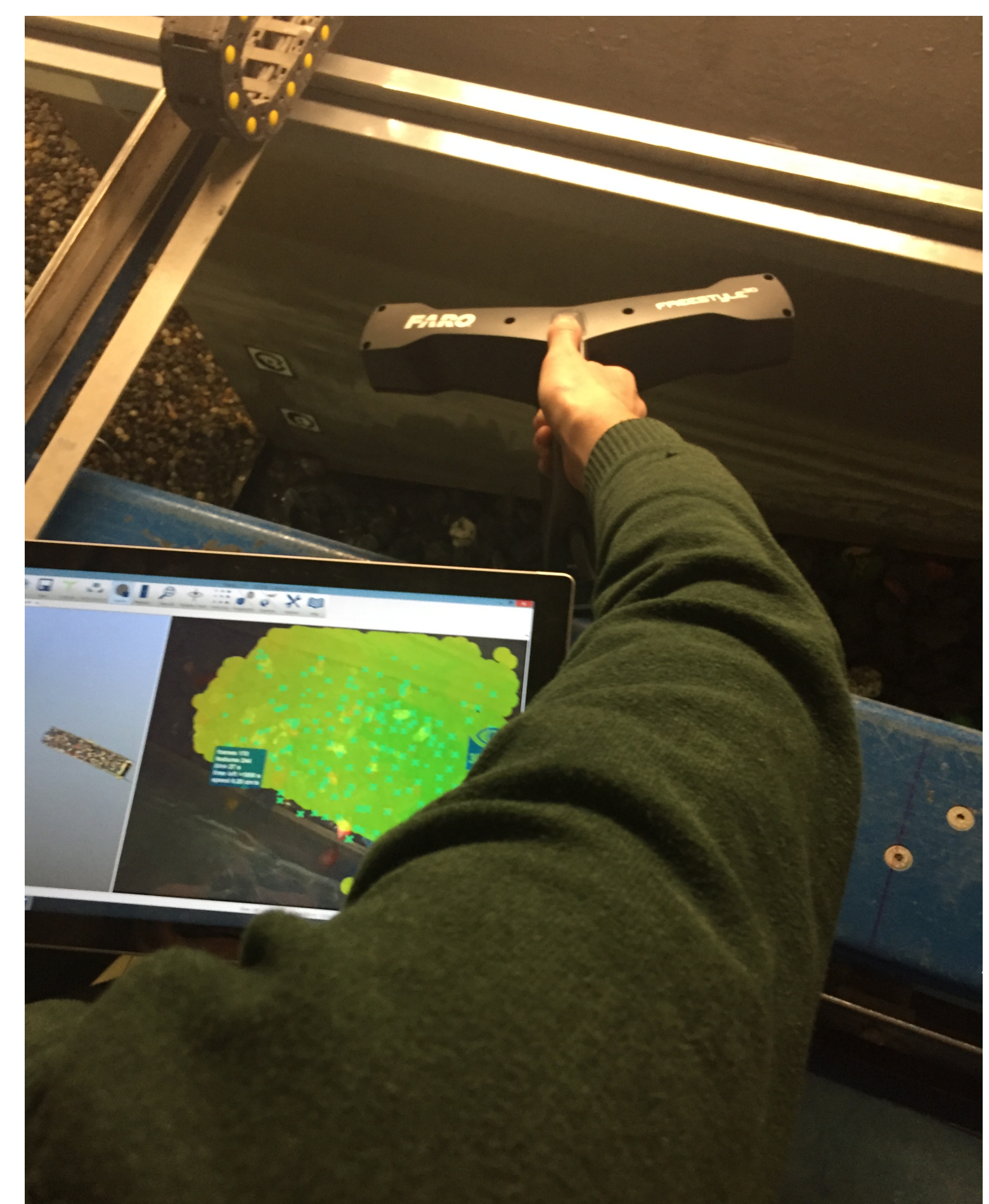
## Applications



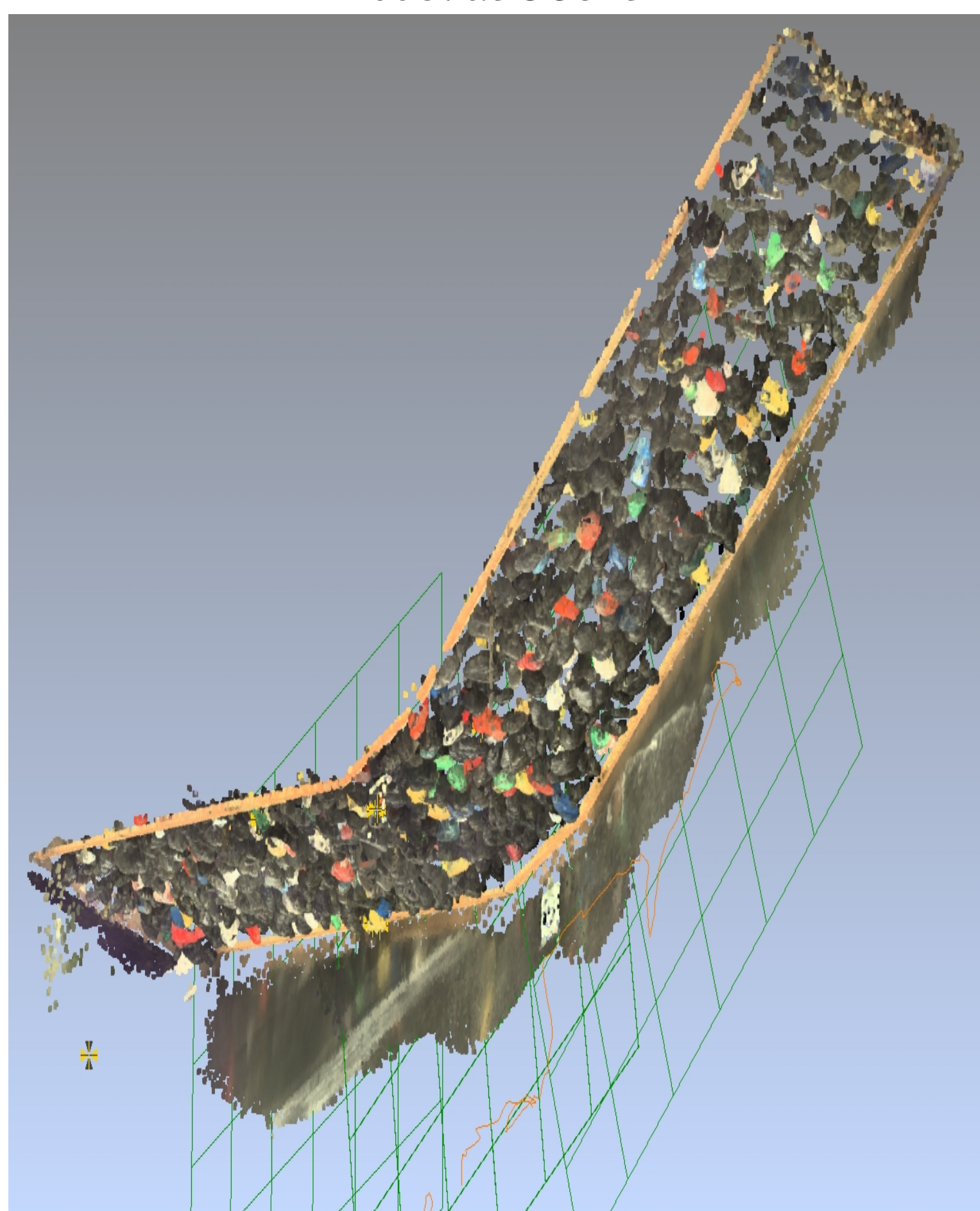
Rubble mound breakwater experimental model at UGent



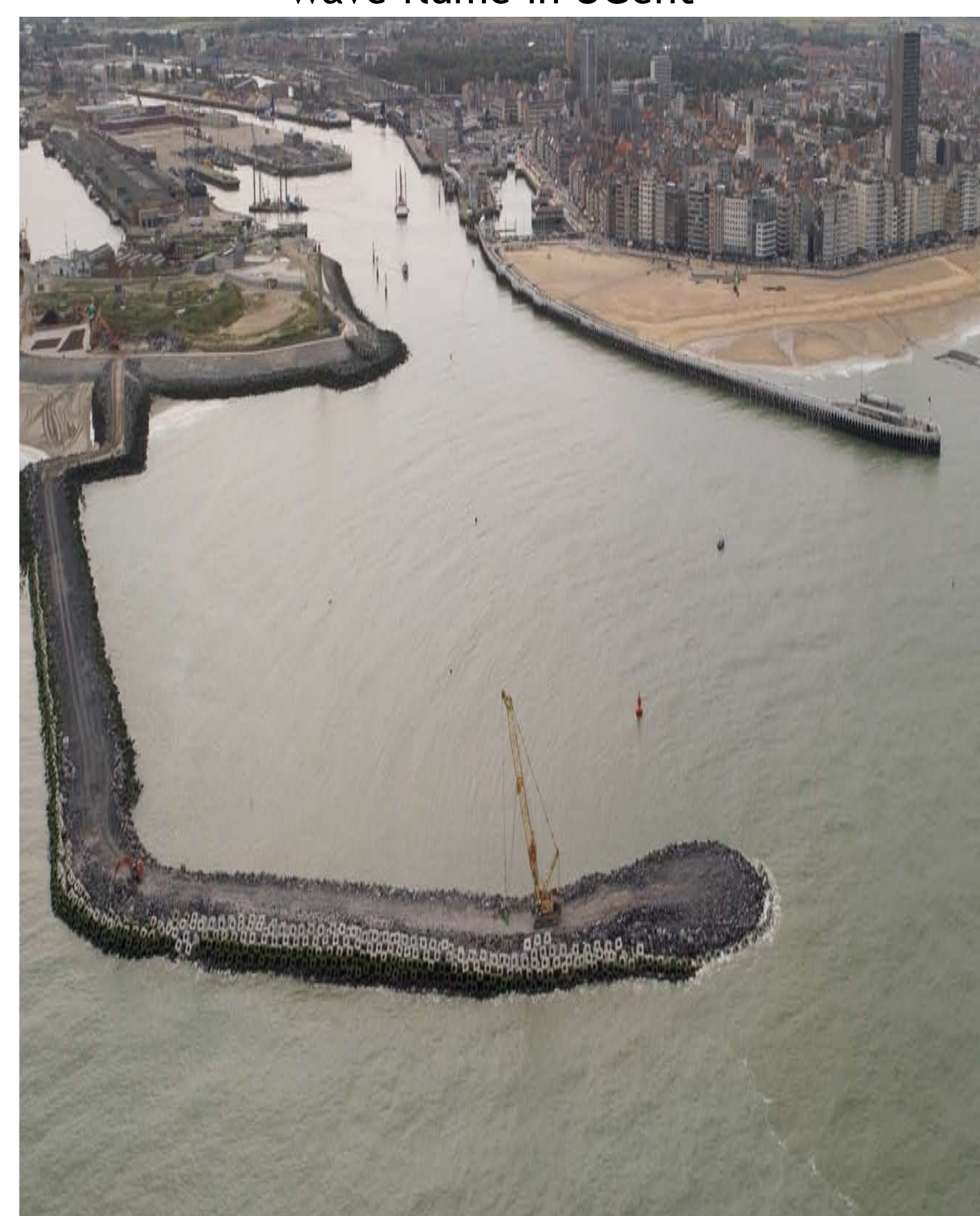
3D scan of a breakwater at the experimental wave flume in UGent



3D real-time visualization of the breakwater



3D rendering of scanned data from measurement



Construction of a rubble mound breakwater (Oostende, Belgium)

- hydraulic structures
- rubble mound breakwaters
- damage assessment
- input for numerical models